

Instructions Manual For Bed



Trifecta
Light

Trifecta Bed Instructions Manual

Congratulations on your Trifecta Light Bed purchase, which was made here, in the USA! Thank you for your support. If you have purchased a new Trifecta bed, it will come with assembly.

Setting Up the Electric

Electric will need to be installed for your bed to run at your location. Your unit will come with a 60 amp 220v quick disconnect box. This box will arrive before the bed arrives, allowing you the option of having the 220v line run prior to the arrival of the bed.

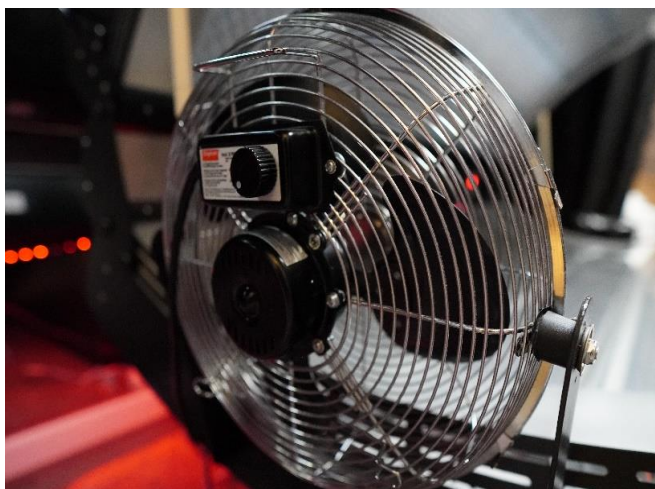
Please note your bed is approximately 7 ft long by 3 ½ ft wide and the power cord comes from the back center of the unit. This cord is 6 ft long, so it is important to set up the disconnect box in the appropriate location so that the power cord is able to reach the disconnect box.

Electrical can be set up for your bed in two ways:

1. Your electrician can come and set it up before your bed arrives. If you do pre-set up the box, the electrician will need to make a second trip out to install the 3 wires from your bed to the 60 amp disconnect box. If you choose to have it done in two trips, it is good to note that the second trip to hook up the three wires should be a lot faster than the initial set-up visit.
2. The second option is to wait until the bed is installed at your location, enabling your electrician to do the set up in one visit.

We suggest you have a discussion with your electrician to see what works best for him or her.

The Fan



The fan is located at the foot of the bed. On the controls located directly on the fan, you can set the unit to your desired speed. We recommend turning it to the highest setting, as this is usually the most comfortable. Once set, you can leave it in the on position, as you will be controlling the fan from the internal controls, which we will explain a little later. The only time to come back to these settings, is if you felt you would like to alter the fans overall speed while using it with the bed.

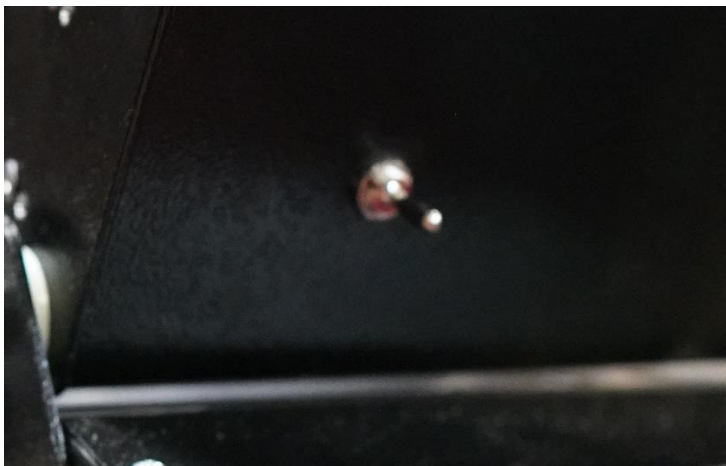
Trifecta Bed Instructions Manual

The Fan – On/Off Switch

The power switch for the fan is located inside and in the center of the back of the bed. To start a new session, we recommend turning this switch to the “On” position. In doing this, you should see the fan go on.



Near-Infrared Only Switch



Your Trifecta Light Bed comes equipped with an On/Off toggle switch, located on the back of your unit. The purpose is to allow you to shut off the red light diodes while providing near-infrared only.

Main On/Off Switch

This is the main on off switch for your unit and serves the following two purposes for use with your bed:

1. If the practitioner wants to manually control the bed going on and off with their client inside, they can do this from here.
2. This also acts as an emergency shut off of the lights if, for any reason, the client wishes to end the session early.

Set the switch to the left for now, which is the “Off” position.



GETTING STARTED



Timer Control

To start a session, hold down the up arrow on the main controls for 3 seconds. The display unit will cycle thru it's warm up phase. Once it stops on "0", it is ready to be programmed. You can use the up/down arrows to set the run time on the unit. The timer is capable of being set to run for up to 15 minutes. We recommend an average session that lasts anywhere from 8 to 12 minutes. Once the desired time is shown on the display window, you can lock it in by pushing the red button on the bottom. The display window will now display the number "3". This is "undress mode",

which gives the client 3 minutes to lay comfortably in the bed and relax before the session starts.

To manually start the Trifecta Light Bed without the 3 minute delay, once the 3 shows up on the bed, touch the bottom red button a second time. You will see the set time now displayed on the unit. The bed is now set to start.

Make sure your client is wearing their goggles before turning on the bed.

Now the practitioner can lower the top of the bed to the desired position. The closer the better... but it's best to make sure the client is comfortable. Please note that the bed was designed with hydraulics that allow you to set the top of the unit to any desired height. The practitioner can now turn on the unit using the power switch. When the session is complete, the bed can be raised by the front red bar and your client can sit up and get dressed. Once the session is over, the bed can be sprayed with the cleaning solution provided, wiped down and is then ready for your next client.

Trifecta Bed Instructions Manual

Other Important Information

The timer, once set, will run through its full cycle you have set it to and will only stop in two ways:

1. The timer will run out automatically
2. The power to your bed is manually shut off
- 3.

Prior to the start of a session, please notify clients of the following:

- The bed canopy was designed with hydraulics. This means that if during a session the client wishes to raise or lower the top of the unit, they can do so safely by themselves.
- Show your client where the On/Off switch for the fan.
- Show your client where the main On/Off switch is and explain to them how to use it if they wish to end their session at any time.

Daily Maintenance of Your Bed

Your bed will come with 2 bottles of concentrated cleaning solution. Each one will make approximately 2 gallons of cleaner for use. We recommend using the included cleaner for your Trifecta Light Bed, as it not only sterilizes the bed, but will also maintain the integrity of the acrylic to ensure the longevity of your bed. Follow the mixing instructions on the bottle to properly dilute the concentrated solution with water. After making a full gallon, we recommend transferring some of the solution to a spray bottle for ease of cleaning the inside of the bed.

Contact us if you need further assistance

Email: support@LipoMelt.com

Phone: (516) 528-1404